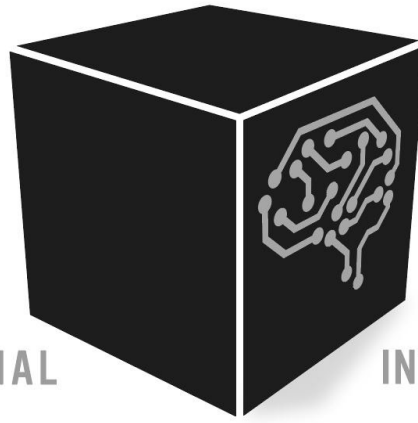




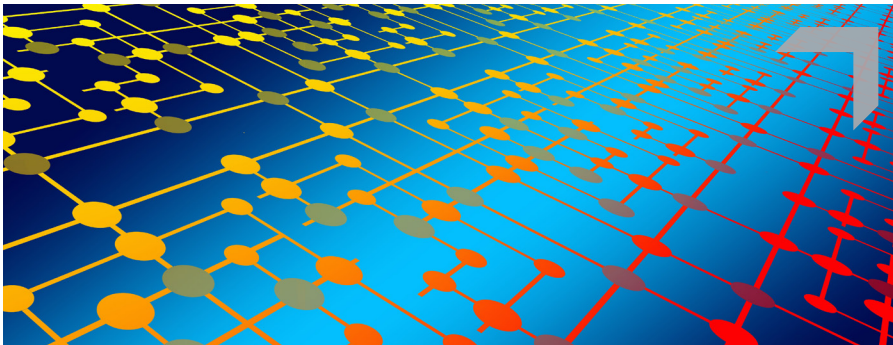
LA BOITE

BLACKBOX • ARTIFICIAL



NOIRE

INTELLIGENCE NEWSLETTER



1 GUIDE

Conversational agents in AI

In the context of the work carried out by the Conseil scientifique de l'éducation nationale (CSEN), WG 6 "Artificial Intelligence and Digital Education" proposes recommendations about the use of conversational agents in the classroom, under the coordination of Aurélie Jean

Link: https://www.reseau-canope.fr/fileadmin/user_upload/Projets/conseil_scientifique_education_nationale/Synthese_IA_et_numerique_version_finale_.pdf

1 COMICS

Here are some comics whose illustrations are entirely created by an AI. Indeed, the author relies on the Text-to-Image generator "Stable Diffusion" from Mid Journey.

We recommend reading "Exodus", for example.

Link: <https://campfirenyc.com/comics/>



1 READING SUGGESTION

Scarlett et Novak by Alain Damasio

Éditions Rageot, 2021, 64 pages, EAN 9782700276947

Novak is running, seemingly jogging, coached by Scarlett, the artificial intelligence broadcasting from his brightphone. As in every minute of his life, she knows him better than anyone else, informing him of his speed, heart rate, distance covered, geolocating him... This dystopian short story highlights humans' growing dependence on AI, and how helpless they will be if the system disappears.

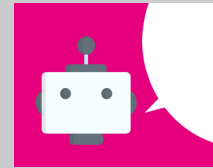
Suitable for secondary school students.

1 DATE

1964

Origin of the ELIZA effect

By designing such a convincing conversational agent, **Joseph Weizenbaum** created the ELIZA effect. The ELIZA effect refers to the way in which text written by a machine is humanised.



1 CHANNEL TO FOLLOW

@defendintelligence makes popular videos about current events in the AI world. The one we suggest you watch is about the TikTok application and its abuses.

Link: <https://www.youtube.com/watch?v=IXxRtYhALRk>

1 ARTICLE

An article dated November 6, 2022 on the Binary blog archives: **Explainable AI and interpretable AI.**

Link: <https://www.lemonde.fr/blog/binaire/2022/11/06/ia-explicable-ia-interpretable-voyage-dans-les-archives-binaires/>



Sign up to receive our next newsletters in your in-box:

<https://sympa.ac-aix-marseille.fr/www/subscribe/intelligence.artificielle>

To exchange around AI, join a Tchapp lounge: <https://dgxy.link/tchap-ia>

This curation is brought to you by the Artificial Intelligence Work Group of the DRANE PACA, pôle Aix-Marseille.