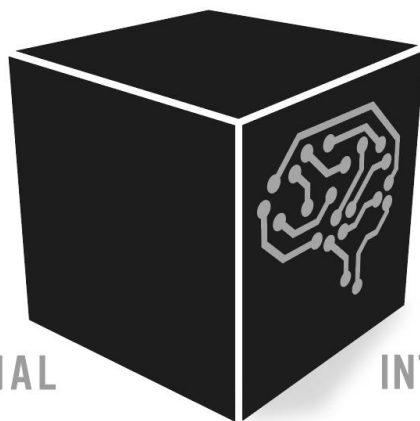


LA BOITE

BLACKBOX • ARTIFICIAL



NOIRE

INTELLIGENCE NEWSLETTER



1 RESSOURCE

ChatGPT by OpenAI

This is a conversational agent available by creating an account. The resource is surprisingly effective at times in providing answers. Many are concerned about possible cheating, as it is difficult to determine whether the student or the machine has written the assignment (Turing test?), while others see it as an assistant to the creation of documents or computer programs.

Link: <https://chat.openai.com/>

1 WEBINAR

AI resources

Vittascience will present its new "AI Training" tool and Learning Robots, the AlphaI robot.

For more information and to register:
<https://www.pedagogie.ac-aix-marseille.fr/webinaire-ia-ressources>



1 GUIDE

Ethical guidelines on the use of artificial intelligence (AI) and data in teaching and learning for educators

This guide, available in several languages, provides ethical guidelines on the use of AI in teaching.

Link: <https://op.europa.eu/fr/publication-detail/-/publication/d81a0d54-5348-11ed-92ed-01aa75ed71a1/language-en>

1 DATE

1980, the Chinese room experiment

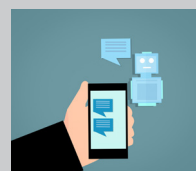
Devised by Jon Searle, this experiment aims at convincing us that an AI cannot have a conscience.

Link: https://en.wikipedia.org/wiki/Chinese_room

1 ARTICLE

ChatGPT is unable to solve the "pizza task".

Link: <https://theconversation.com/beau-parleur-comme-une-ia-196084>



1 VIDEO

Ethical use of AI and data

Interview with Alain Thillay, national expert seconded to the Digital Education Unit (EU DG EAC) of the European Commission during the Educ@tech Expo (25/10/2022).

Link: <https://www.ludomag.com/2022/12/06/intelligence-artificielle-utilisation-ethique-de-lia-et-des-donnees-avec-alain-thillay-de-la-commission-europeenne/>



Pour recevoir les prochaines newsletters par courriel, inscrivez-vous :

<https://sympa.ac-aix-marseille.fr/www/subscribe/intelligence.artificielle>

Pour échanger autour de l'IA, rejoignez un salon Tchap : <https://dgxy.link/tchap-ia>

Une veille réalisée par le groupe académique de compétences sur l'intelligence artificielle de la DRANE PACA, pôle Aix-Marseille.